

A God-First Family



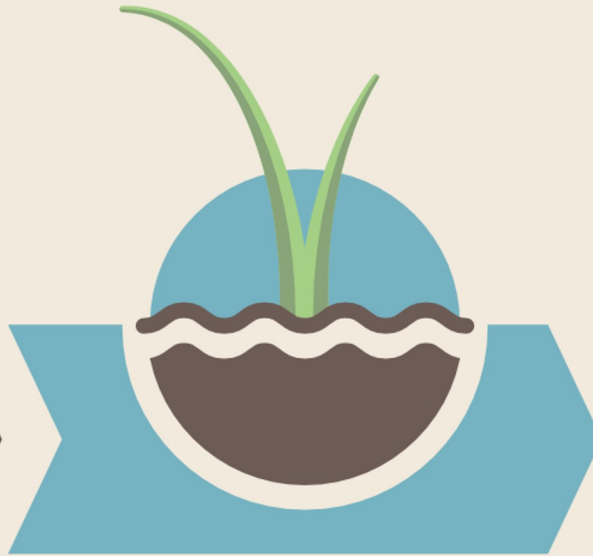
HAND TO
PLOW



IN THE FIELD OF **OUR FAMILY**



**PLANTING
THE SEED**



**ENTRENCHING
HABITS**



**FRUIT OF
OUR LABOR**



HAND TO
PLOW



**The Impact of a
God-First Family**

On Our Children

HAND TO
PLOW

The logo consists of a large white circle containing a dark green mountain range silhouette. A white plow is superimposed over the mountains, with its handle extending to the right. The words 'HAND TO' are written in a dark green, sans-serif font above the circle, and 'PLOW' is written in a larger, dark green, sans-serif font across the bottom of the circle.

**The Impact of a
God-First Family**



On Our Children

“Fathers, do not provoke your children to anger, but bring them up in the discipline and instruction of the Lord.”

– Ephesians 6:4

**The Impact of a
God-First Family**



On Our Children

- Their Character



On Our Children

- Their Character
- Their Priorities

**The Impact of a
God-First Family**



On Our Children

- Their Character
- Their Priorities
- Their View of Christianity



On Our Children

- Their Character
- Their Priorities
- Their View of Christianity
- Their faith
(even if they lose it)



HAND TO

PLOW

**The Impact of a
God-First Family**

On Our Children

On the Local Church



HAND TO

PLOW

**The Impact of a
God-First Family**

On Our Children

On the Local Church

On the World



HAND TO
PLOW

**The Impact of a
God-First Family**

On Our Children

On the Local Church

On the World

Therefore, those who had been scattered went about preaching the word.

– Acts 8:4



HAND TO

PLOW

On Our Children

On the Local Church

On the World

On Our God

**The Impact of a
God-First Family**



HAND TO
PLOW

The Impact of a God-First Family

On Our Children

On the Local Church

On the World

On Our God

For this reason a man shall leave his father and his mother, and be joined to his wife; and they shall become one flesh. – Genesis 2:24

HAND TO
PLOW

