

**Same-sex relationships**

**Same-sex relationships**

**Transgenderism**

**Same-sex relationships**

**Transgenderism**

**Lack of respect for authority**

**Same-sex relationships**

**Transgenderism**

**Lack of respect for authority**

**Racism**

**Same-sex relationships**

**Transgenderism**

**Lack of respect for authority**

**Racism**

**Post-modernism**

**Same-sex relationships**

**Transgenderism**

**Lack of respect for authority**

**Racism**

**Post-modernism**

**Devaluing of Marriage**

**Same-sex relationships**

**Transgenderism**

**Lack of respect for authority**

**Racism**

**Post-modernism**

**Devaluing of Marriage**

**Atheism**

**Same-sex relationships**

**Transgenderism**

**Lack of respect for authority**

**Racism**

**Post-modernism**

**Devaluing of Marriage**

**Devaluing of life of the unborn**

**Atheism**



**Same-sex relationships**

**Transgenderism**

**Lack of respect for authority**

**Racism**

**Post-modernism**

**Devaluing of Marriage**

**Devaluing of life of the unborn**

**Atheism**

In those days there was no king in Israel; everyone did what was right in his own eyes.

- Judges 21:25

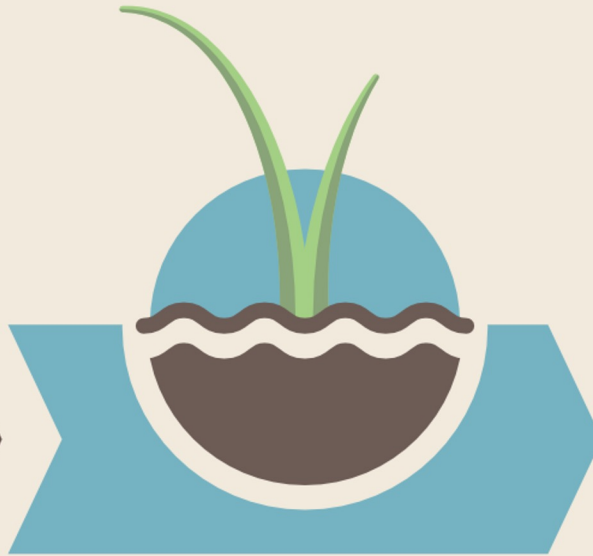
HAND TO  
PLOW



# IN THE FIELD OF OUR HEARTS



**PLANTING  
THE SEED**



**ENTRENCHING  
HABITS**

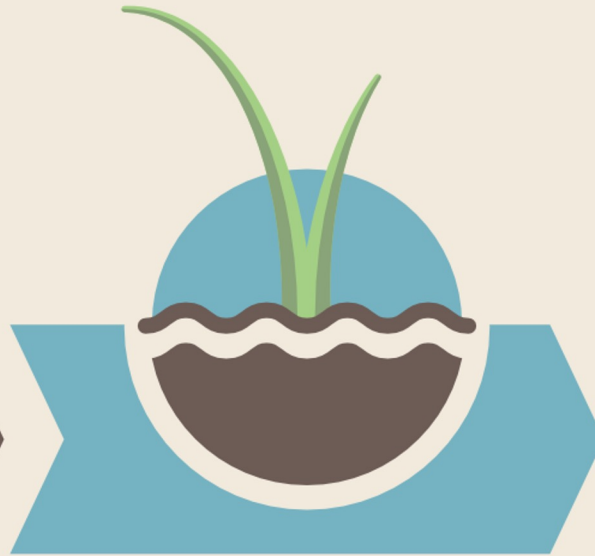


**FRUIT OF  
OUR LABOR**

# IN THE FIELD OF **OUR FAMILY**



**PLANTING  
THE SEED**



**ENTRENCHING  
HABITS**



**FRUIT OF  
OUR LABOR**

Stay Connected to  
God

HAND TO  
PLOW

The logo consists of a large white circle containing a dark green mountain range silhouette. A white plow is superimposed over the mountains, with its handle extending to the right. The words 'HAND TO' are positioned above the circle, and 'PLOW' is written in large, dark green, serif capital letters across the bottom of the circle.

**Securing the  
Family**

A silhouette illustration of a farmer wearing a hat, pushing a wooden plow pulled by an ox. They are working in a field with rolling green hills in the background under a bright sun with rays.



HAND TO

PLOW

**Securing the  
Family**

**Stay Connected to  
God**

**Through His Word**



# Stay Connected to God

## Through His Word

- Deuteronomy 6:6-7



# Stay Connected to God

## Through His Word

- Deuteronomy 6:6-7
- Ephesians 6:4





# Stay Connected to God

## Through His Word

- Deuteronomy 6:6-7
- Ephesians 6:4
- Acts 10:24



# Stay Connected to God

## Through His Word

- Deuteronomy 6:6-7
- Ephesians 6:4
- Acts 10:24

## Through Prayer



**Securing the  
Family**

## Stay Connected to God

### **Through His Word**

- Deuteronomy 6:6-7
- Ephesians 6:4
- Acts 10:24

### **Through Prayer**

- Luke 11:1-4



HAND TO  
PLOW

**Securing the  
Family**

## Stay Connected to God

### **Through His Word**

- Deuteronomy 6:6-7
- Ephesians 6:4
- Acts 10:24

### **Through Prayer**

- Luke 11:1-4
- John 17:13-17



HAND TO  
PLOW

**Securing the  
Family**

## Stay Connected to God

### **Through His Word**

- Deuteronomy 6:6-7
- Ephesians 6:4
- Acts 10:24

### **Through Prayer**

- Luke 11:1-4
- John 17:13-17
- Job 1:1-5



HAND TO

PLOW

**Securing the  
Family**

**Stay Connected to  
God**

**Stay Connected to  
One Another**



HAND TO  
PLOW

**Securing the  
Family**

Stay Connected to  
God

Stay Connected to  
One Another

“But a child left to  
himself brings shame  
to his mother.”

– Proverbs 29:15



HAND TO  
PLOW

**Securing the  
Family**

Stay Connected to  
God

Stay Connected to  
One Another

Stay Connected to  
Your Blessings





HAND TO  
PLOW

**Securing the  
Family**

Stay Connected to  
God

Stay Connected to  
One Another

Stay Connected to  
Your Blessings

Stay Connected to  
God's People