

Dinosaurs and Biblical Creation

Genesis 1:20-25

Dinosaur National Monument

Near Vernal in Northeast Utah



Dinosaur National Monument

Near Vernal in Northeast Utah



Dinosaur National Monument

Near Vernal in Northeast Utah



Dinosaur National Monument

Near Vernal in Northeast Utah



Dinosaur National Monument

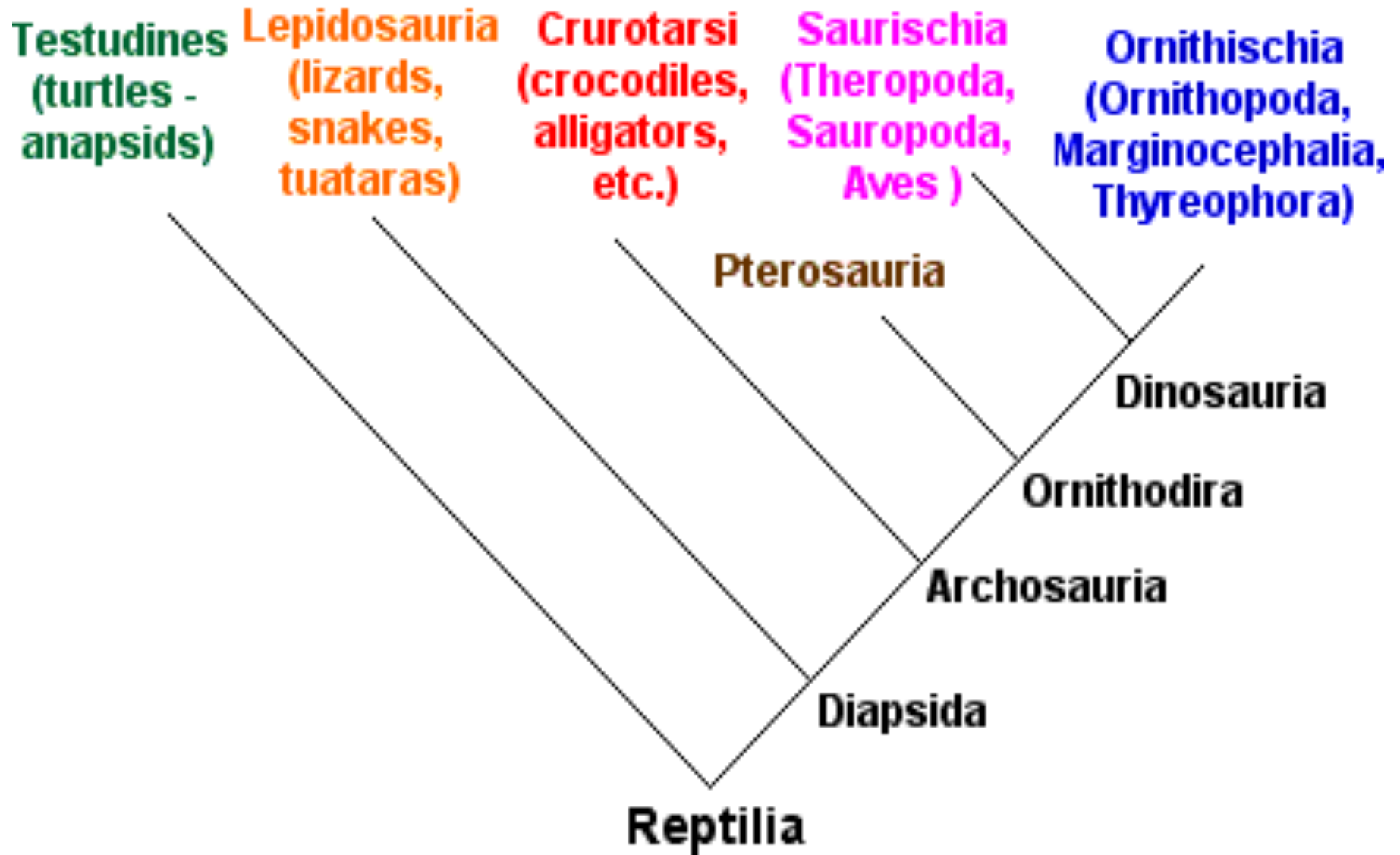
Near Vernal in Northeast Utah

- Over 1600 fossilized dinosaur bones buried in this fossil quarry**
- One of many dinosaur graveyards found in the vast Morrison Formation in our Western States**
 - Como Bluff & Howe Quarries in Wyoming**
 - Fruita and Dry Mesa Quarries in Colorado**

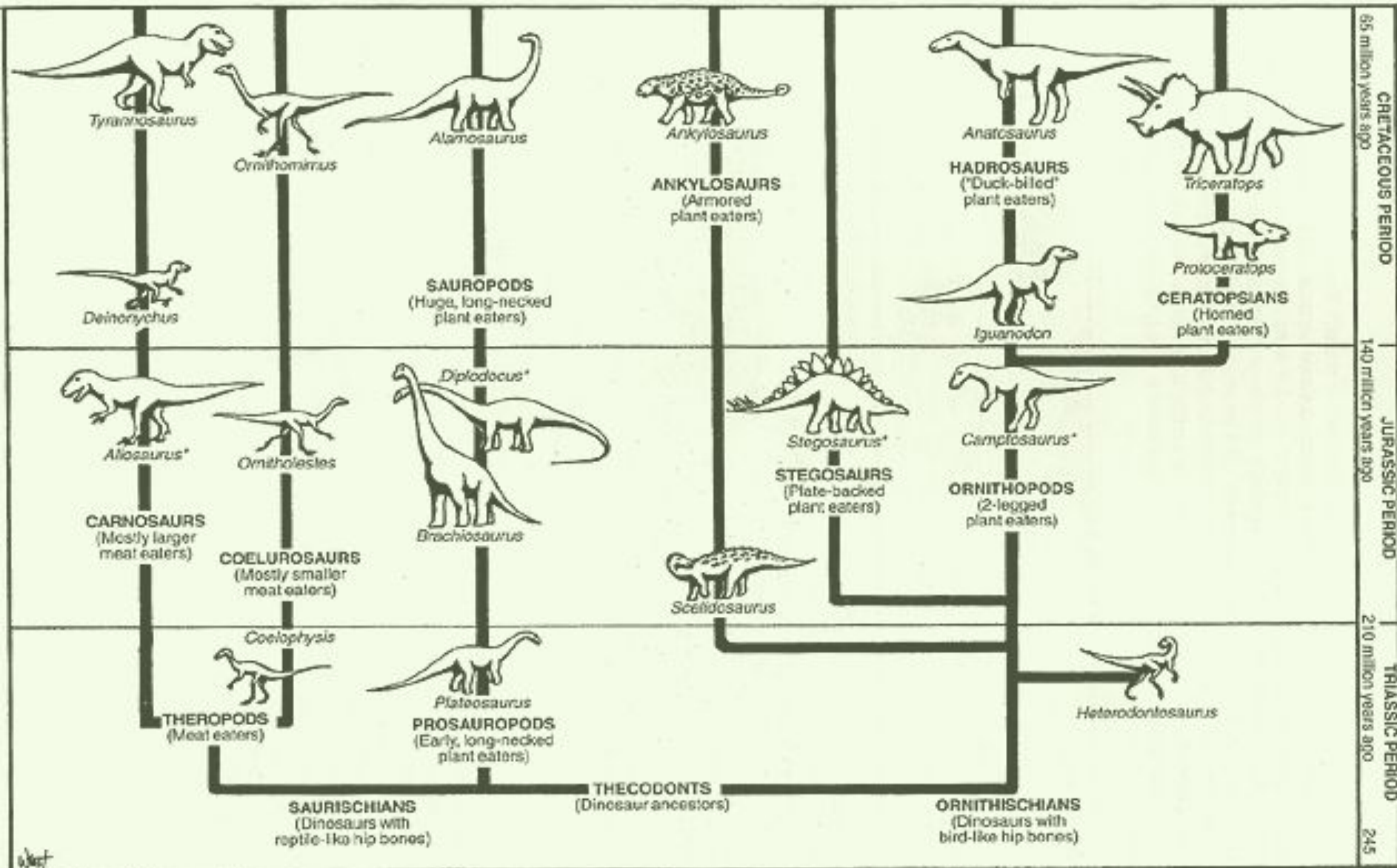
Modeled Replica of an Allosaurus



Cladogram for Reptilia



Dinosaur Family Tree



65 million years ago
CRETACEOUS PERIOD
140 million years ago
JURASSIC PERIOD
210 million years ago
TRIASSIC PERIOD
245

* Fossil found in the the Dinosaur National Monument Quarry

Are Dinosaurs Mentioned in the Bible?

□ Exodus 20:11

- The earth, the sea, and all that is in them

□ Genesis 1:20-25

- Terms broad enough to include all kinds of living creatures, including dinosaurs
- Cattle ... and beast of the earth

Are Dinosaurs Mentioned in the Bible?

- **Job 40:15-24 – Behemoth**
 - “Eats grass like an ox”
 - “Moves his tail like a cedar”
 - “Bones like beams of bronze”
 - “Ribs like bars of iron”
 - “First of the ways of God”
- **Crocodile, Elephant, Hippopotamus ?**

Are Dinosaurs Mentioned in the Bible?

- **Job 40:15-24 – Behemoth**
 - “Eats grass like an ox”
 - “Moves his tail like a cedar”
 - “Bones like beams of bronze”
 - “Ribbs like bars of iron”
 - “First of the ways of God”

- **Dinosaur ?**

Are Dinosaurs Mentioned in the Bible?

- **Job 41:1-34 – Leviathan**
 - **Invulnerable to harpoon, spear, sword, dart, javelin**
 - **Undersides like sharp potsherds**
 - **No one would dare stir him up**
 - **Not able to conquer him**
- **Crocodile or Plesiosaur ?**

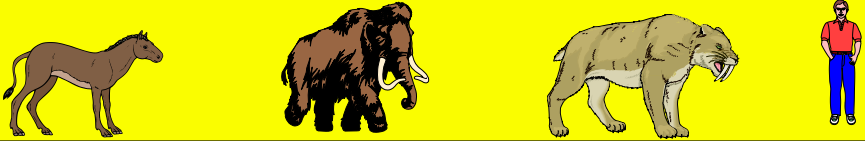
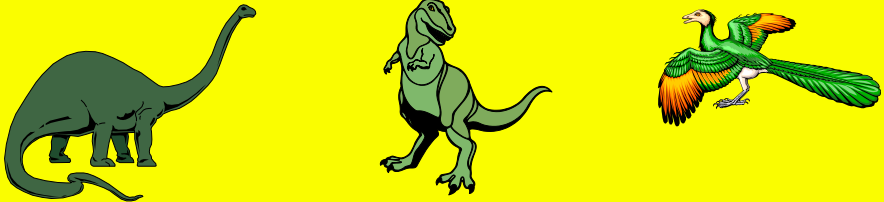
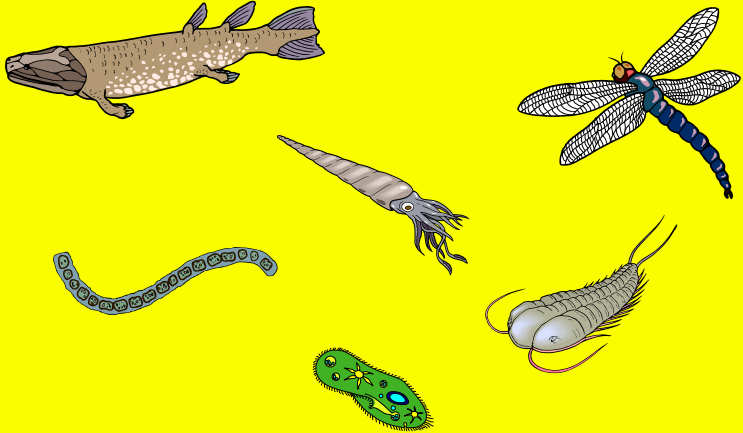
Did Humans and Dinosaurs Co-Exist?

- **Genesis 1:1 – 2:3 – The most natural interpretation implies this**
 - **Created on the same day**
 - **Use of the Hebrew word for “day” when used with numbers (sixth day) and expressions like “evening and morning” in the rest of the Old Testament**
 - **Exodus 20:11; 31:17**

Did Humans and Dinosaurs Co-Exist?

- **Genesis 1:1 – 2:3**
 - **Other interpretations try to harmonize the passage with external scientific evidences concerning long ages.**
 - **Gap Theory**
 - **Day/Age Theory**
 - **Non-Consecutive Day Theory**

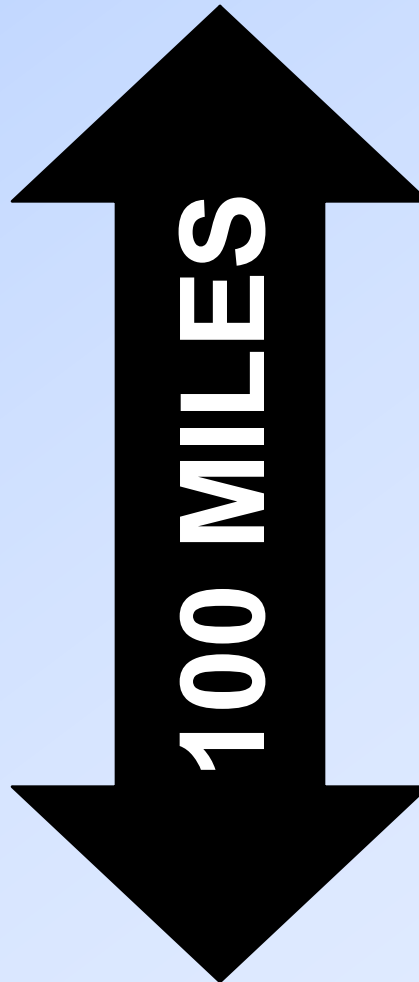
Typical Evolutionary Viewpoint Geologic Column

| | | |
|-----------------------|---------------|---|
| Ceno- zoic | Quaternary |  |
| | Tertiary | |
| Meso- zoic | Cretaceous |  |
| | Jurassic | |
| | Triassic | |
| Paleozoic | Permian |  |
| | Carboniferous | |
| | Devonian | |
| | Silurian | |
| | Ordovician | |
| | Cambrian | |

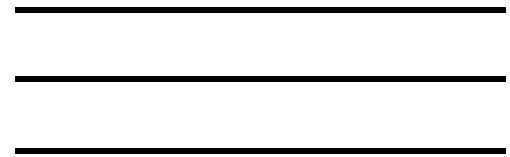
Geological Time Column Does Not Exist Anywhere on Earth

“If a pile were to be made by using...each geologic age, it would be at least 100 miles high.”

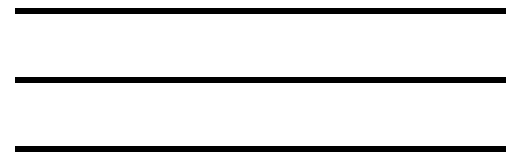
*Geology by
von Engen & Castor*



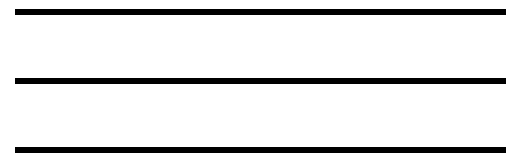
Cenozoic Era



Mesozoic Era



Paleozoic Era

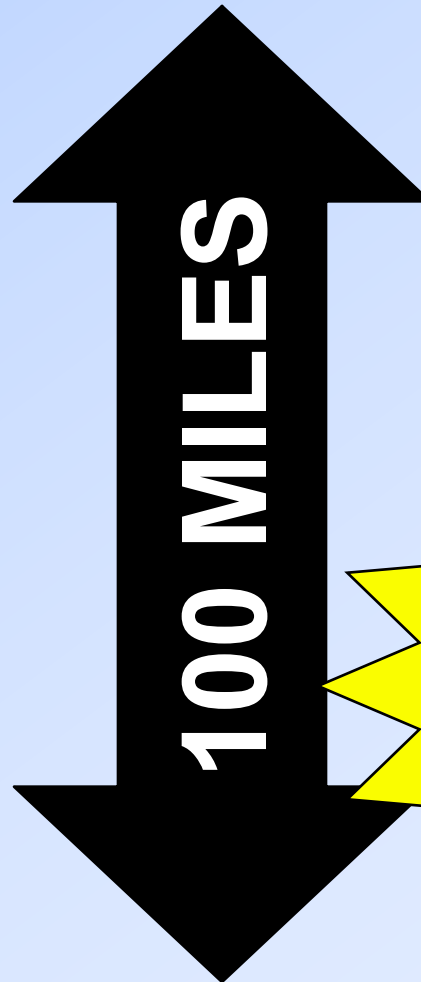


Pre-Cambrian Era

Geological Time Column Does Not Exist Anywhere on Earth

“If a pile were to be made by using...each geologic age, it would be at least 100 miles high.”

*Geology by
Von Engen & Castor*




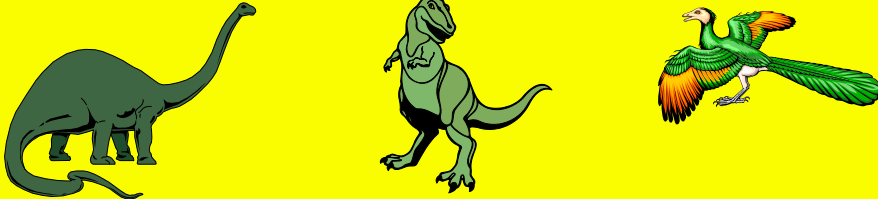
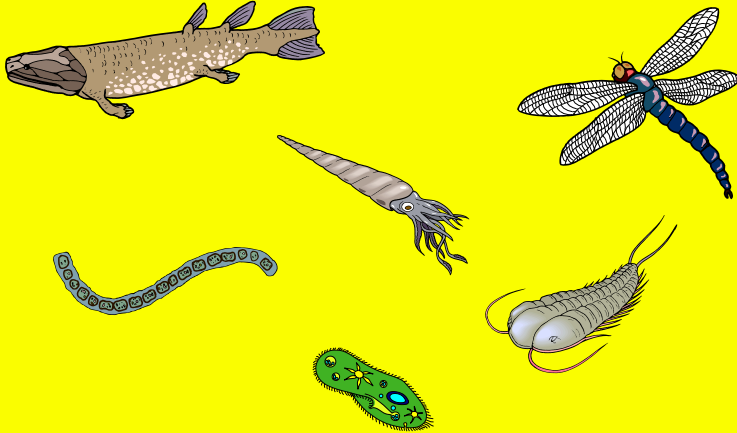
Cenozoic Era

Mesozoic Era



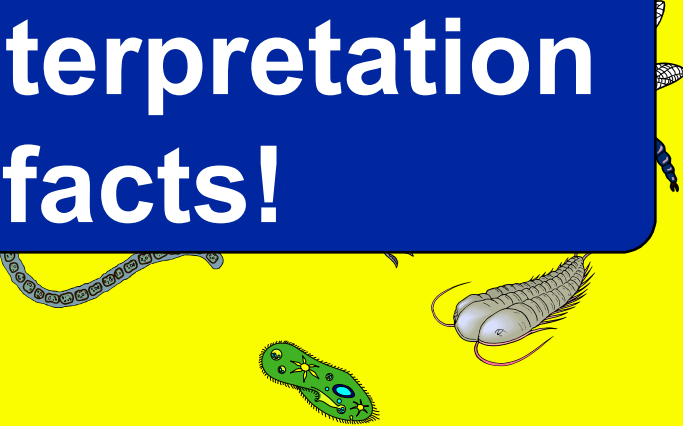
**Grand Canyon
is only 1 1/2
miles deep**

Pre-Cambrian Era

Geologic Column

| | | |
|-----------------------|----------------------|---|
| Ceno- zoic | Quaternary |  |
| | Tertiary | |
| Meso- zoic | Cretaceous |  |
| | Jurassic | |
| | Triassic | |
| Paleozoic | Permian |  |
| | Carboniferous | |
| | Devonian | |
| | Silurian | |
| | Ordovician | |
| | Cambrian | |

Geologic Column

| | | |
|---------------|---------------|---|
| Ceno- zoic | Quaternary |  |
| | Tertiary | |
| Meso- zoic | Cretaceous |  |
| | Jurassic | |
| Paleozoic | Silurian |  |
| | Ordovician | |
| | Carboniferous | |
| | Cambrian | |

**Not a fact,
but an interpretation
of facts!**

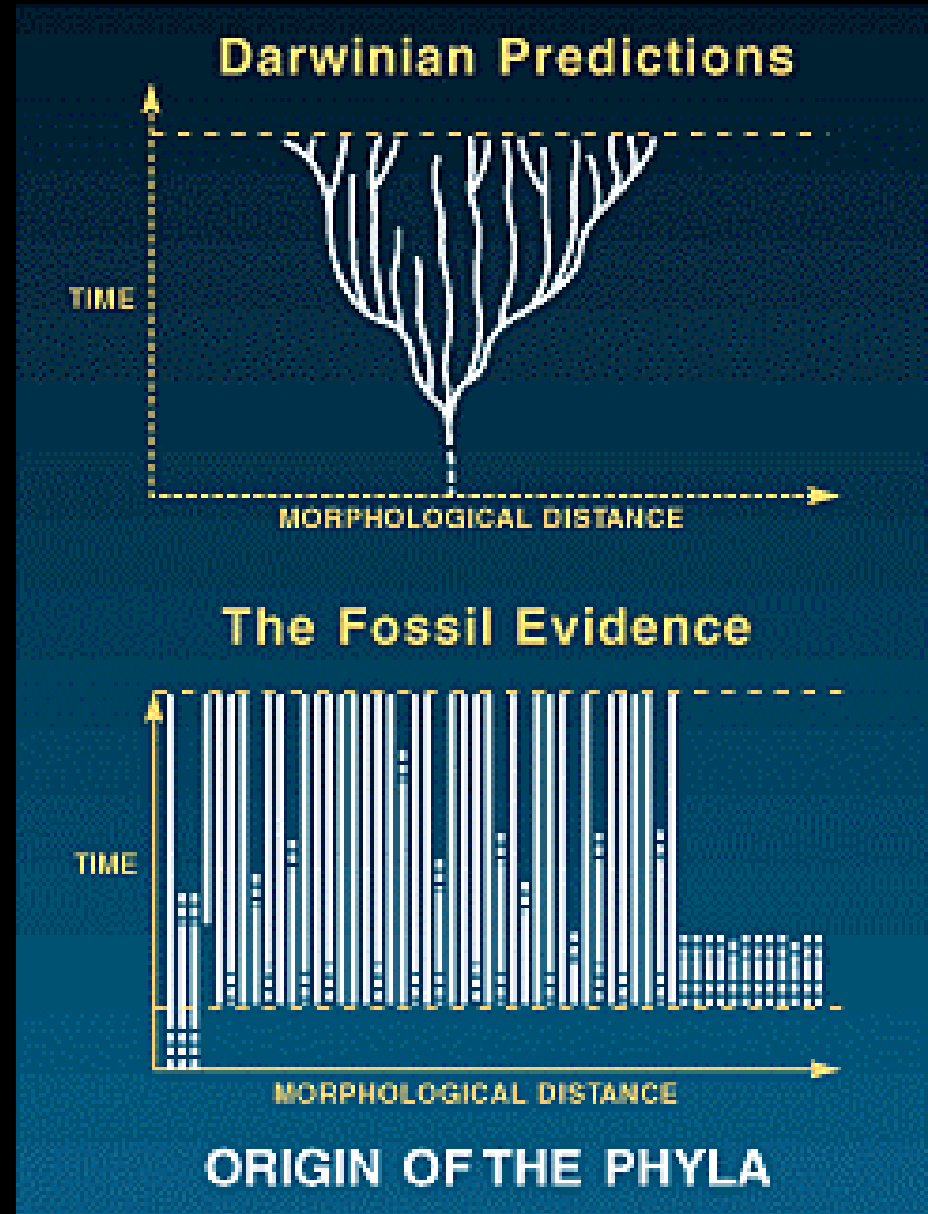
Notable Features of the Fossil Record

Feature 1: Filled with fossils which encapsulate information

Notable Features of the Fossil Record

- Feature 1:** Filled with fossils which encapsulate information
- Feature 2:** **Early origin of the phyla**

- **Sudden appearance of a great variety of organisms in the Cambrian period**
- **All but one of the phyla present in the Cambrian!**
- **Major challenge for the evolutionary theory**

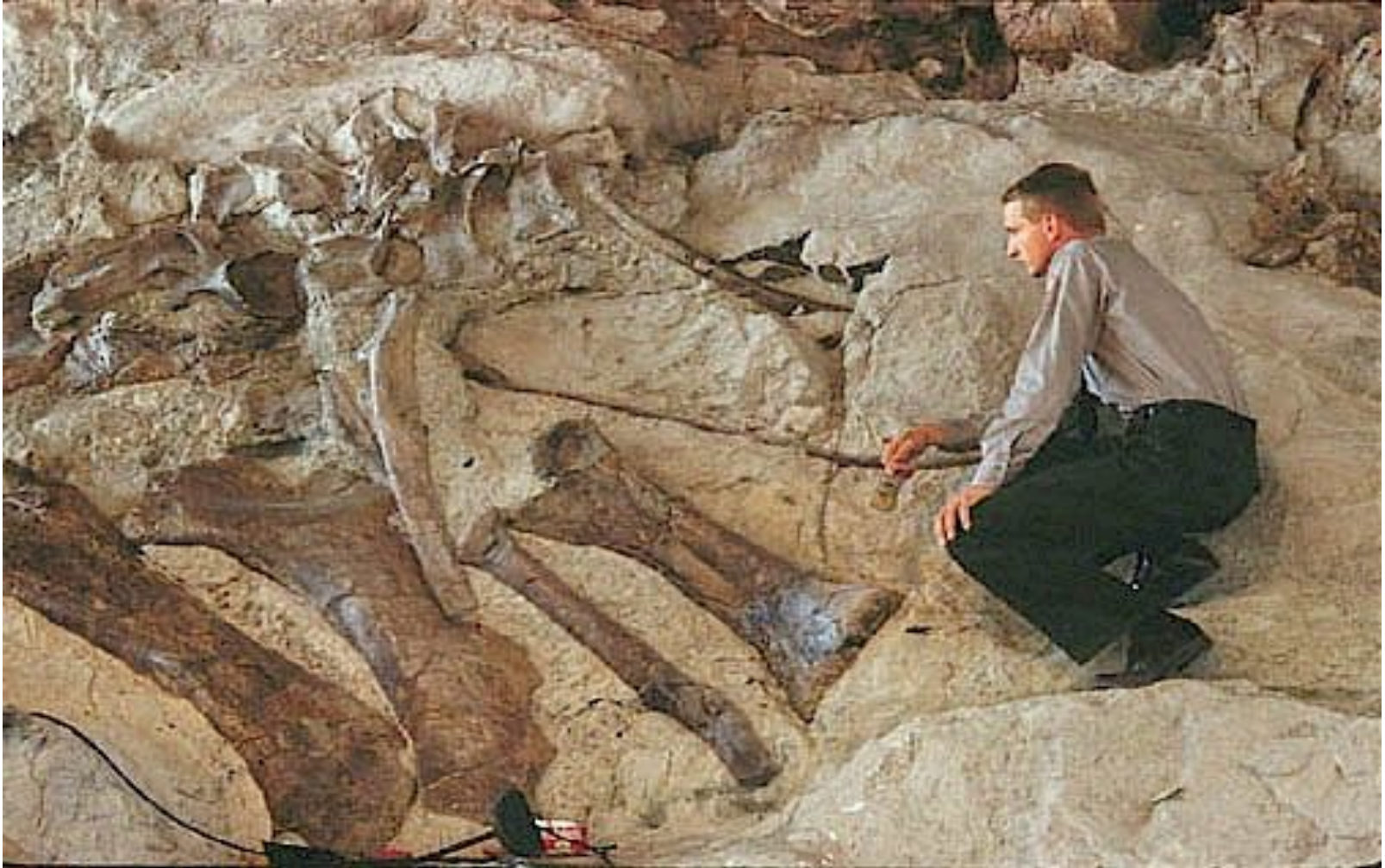


Notable Features of the Fossil Record

- Feature 1:** Filled with fossils which encapsulate information
- Feature 2:** Early origin of the phyla
- Feature 3:** **Fossils are fully formed when they first appear.**
Lack of transitional forms

Dinosaur National Monument

No intermediates leading up to these dinosaur fossils!



Notable Features of the Fossil Record

- Feature 1:** Filled with fossils which encapsulate information
- Feature 2:** Early origin of the phyla
- Feature 3:** Fossils are fully formed when they first appear
Lack of transitional forms
- Feature 4:** **Fossil stasis, sudden extinction**

Dinosaur National Monument

Fossil graveyards testify to sudden catastrophes



Hell Creek Formation

Famous “Mummified” Hadrosaur Named “Dakota”

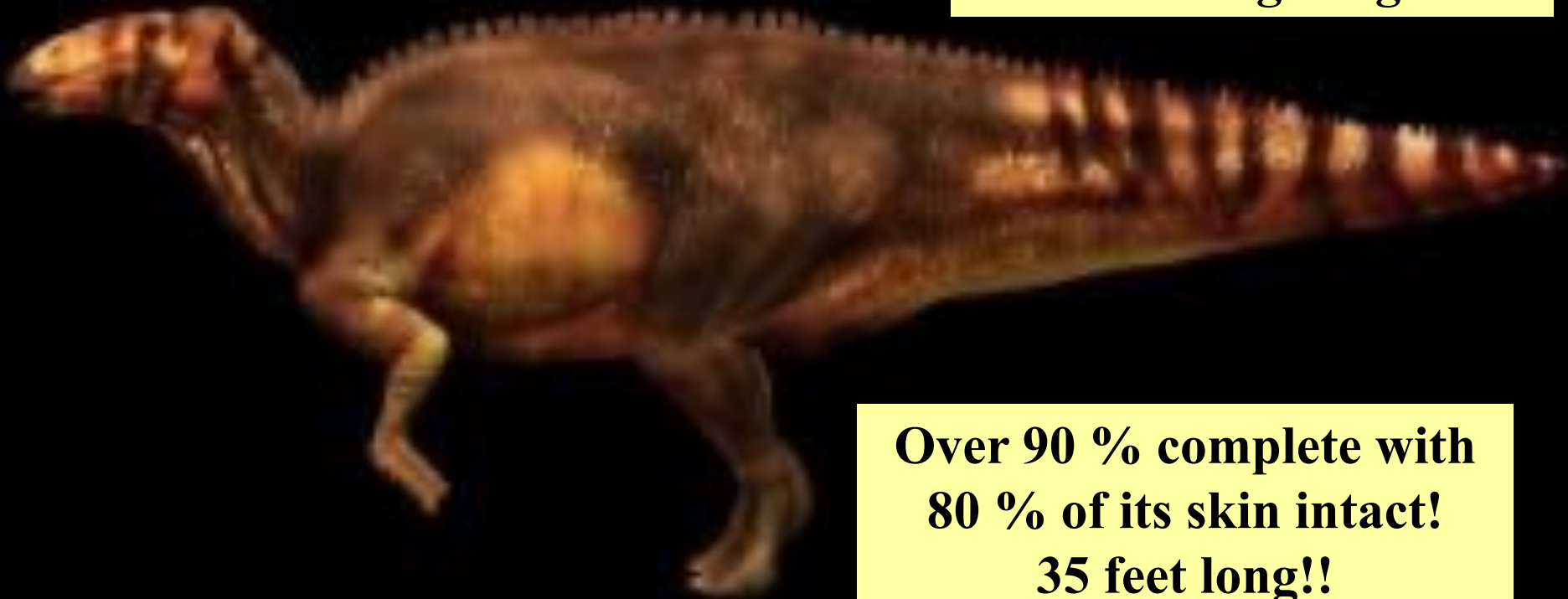


Hell Creek Formation

Famous “Mummified” Hadrosaur Named “Dakota”

**Sudden burial
70 Million years ago???**

**Discovered in North
Dakota in 2006 by an
amateur geologist**



**Over 90 % complete with
80 % of its skin intact!
35 feet long!!**

Over 230 Fossil Sites Around the World

Dinosaur Nests, Eggs & Embryos – Sudden Burial

Nest



**Eggs
with
Embryos**



**Embryo
up close**



Eggs



Did Humans and Dinosaurs Co-Exist?

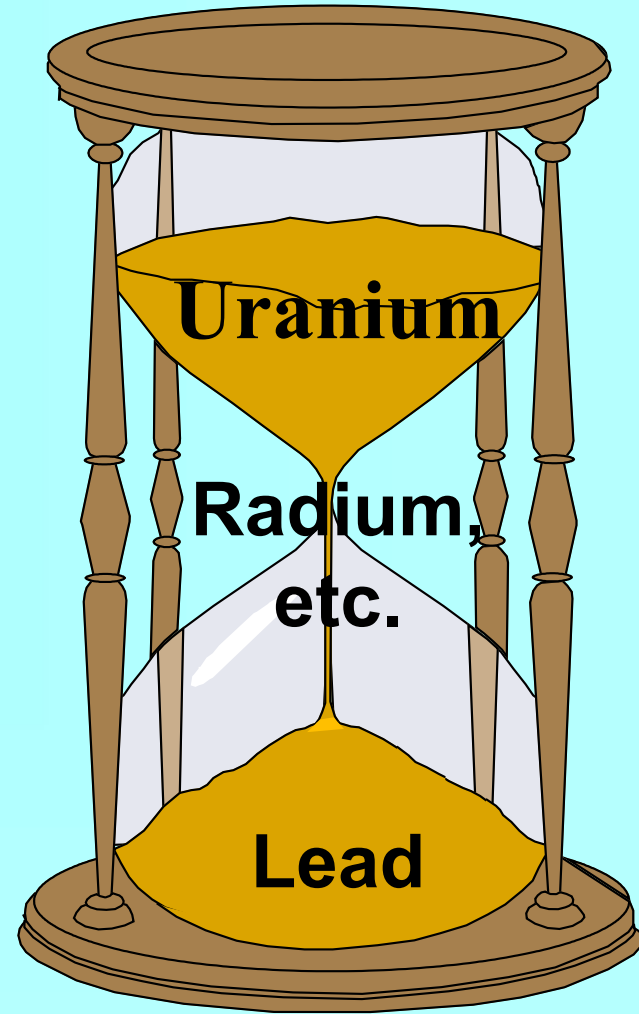
- **Dinosaur fossils could be much younger than evolutionists believe**
- **Historical Evidence**
 - **Dragon legends in every society**
- **Physical Evidence**
 - **Carvings and drawings accurately depicting dinosaurs**
 - **Dinosaur figurines**
 - **Paluxy Riverbed ??**

RADIOACTIVITY

**Radioactive material
emits alpha-particles or
beta-particles**

**Decays or decomposes
into different elements**

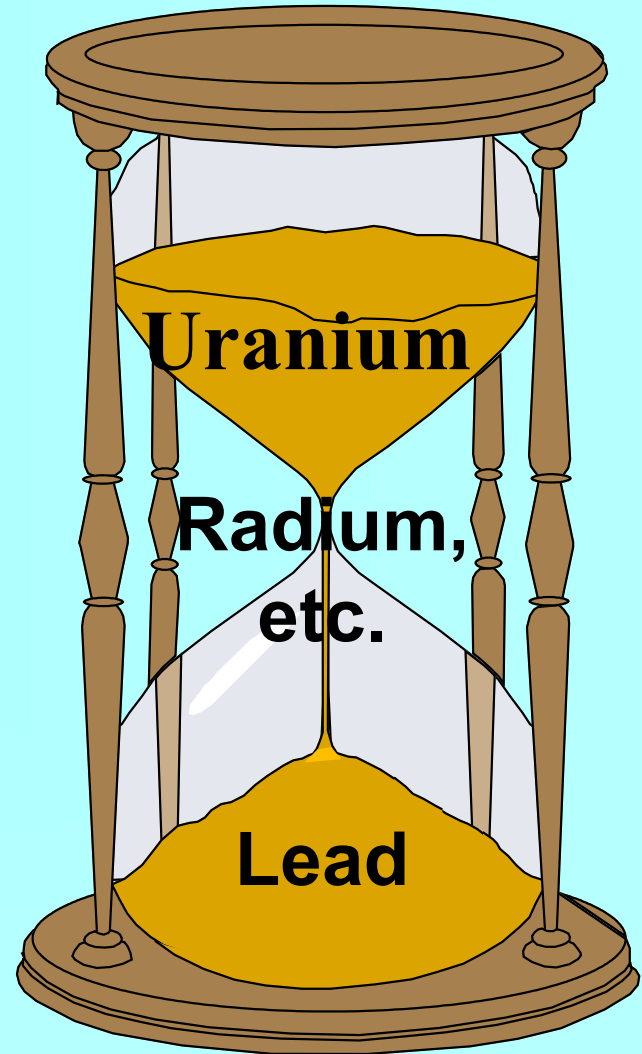
**Radioactive
Decay
Tells Time Like
an Hourglass**



$$\text{TIME (Proper units)} = k \ln \frac{\text{ATOMS Uranium/Lead NOW}}{\text{ATOMS Uranium/Lead at the BEGINNING}}$$

Do we know how much Uranium/Lead was present at the beginning?

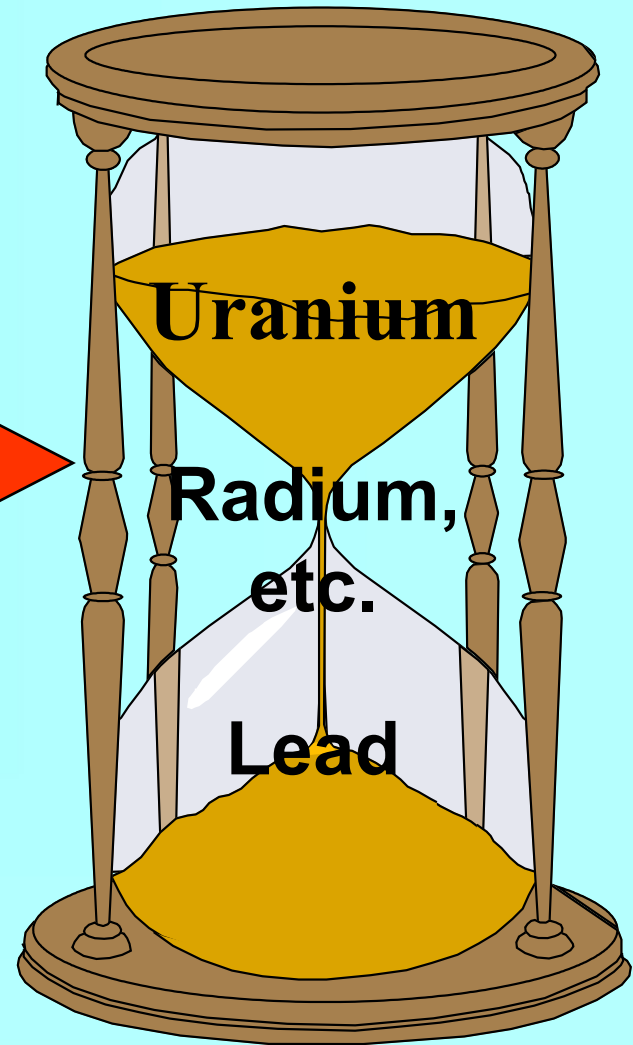
**Radioactive
Decay
Tells Time Like
an Hourglass**



$$\text{TIME (Proper units)} = k \ln \frac{\text{ATOMS Uranium/Lead NOW}}{\text{ATOMS Uranium/Lead at the BEGINNING}}$$

Suppose the opening
changed sizes at
various rates

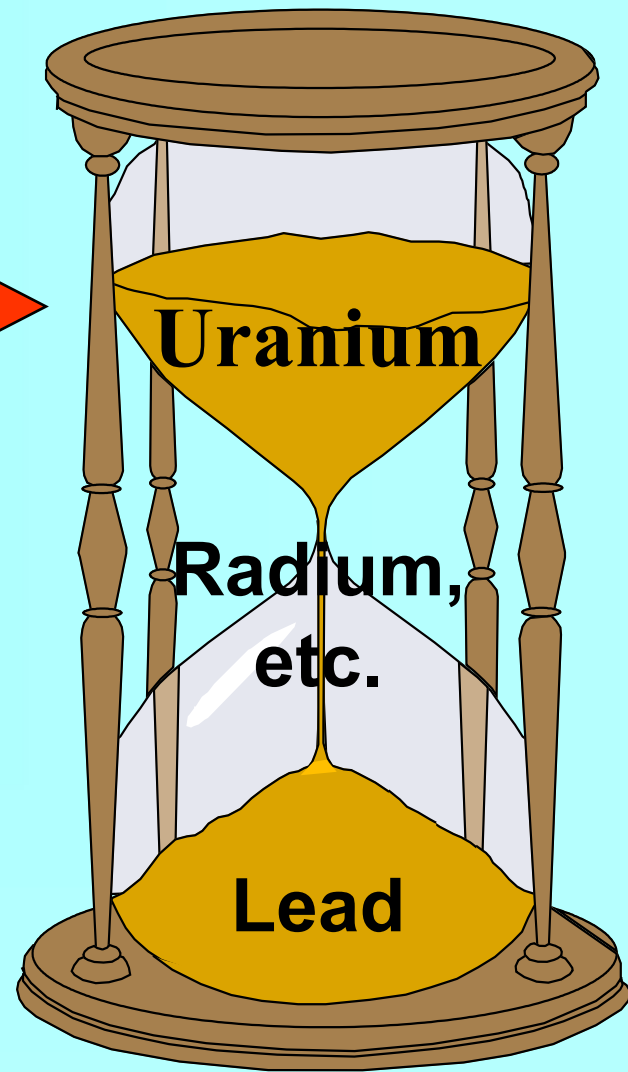
**Radioactive
Decay
Tells Time Like
an Hourglass**



$$\text{TIME (Proper units)} = k \ln \frac{\text{ATOMS Uranium/Lead NOW}}{\text{ATOMS Uranium/Lead at the BEGINNING}}$$

Suppose some Uranium was gained or lost in the system?

Radioactive Decay Tells Time Like an Hourglass



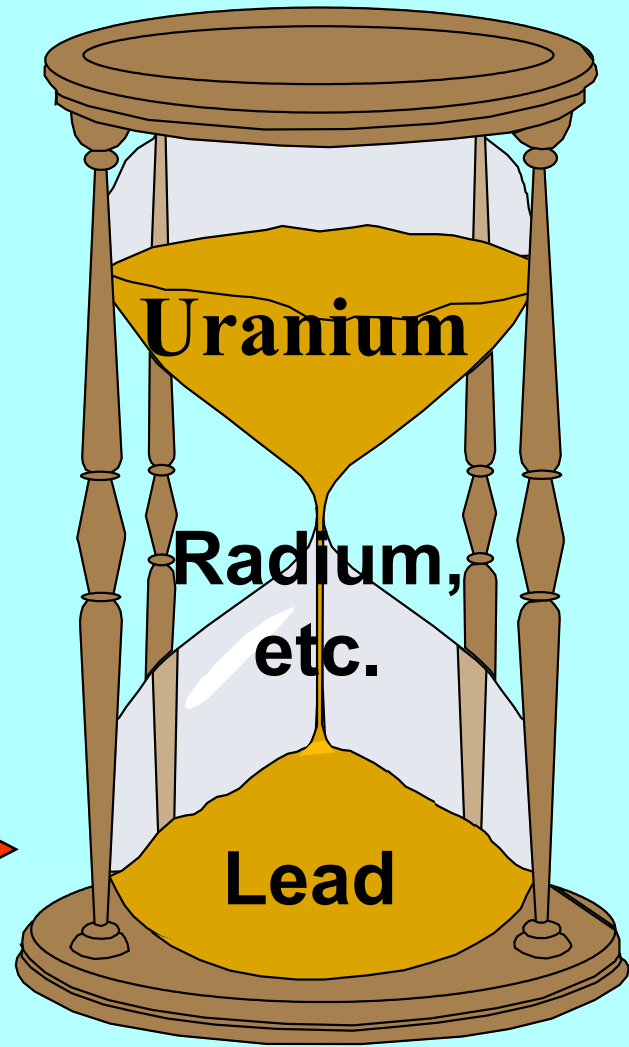
TIME (Proper units) = $k \ln$

ATOMS Uranium/Lead NOW

ATOMS Uranium/Lead at the BEGINNING

Radioactive Decay Tells Time Like an Hourglass

Suppose some Lead
was gained or lost in
the system?



TIME (Proper units) = $k \ln$

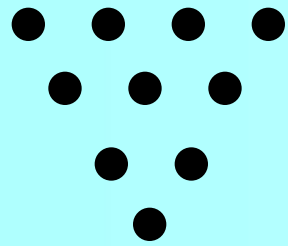
ATOMS Uranium/Lead NOW

ATOMS Uranium/Lead at the
BEGINNING

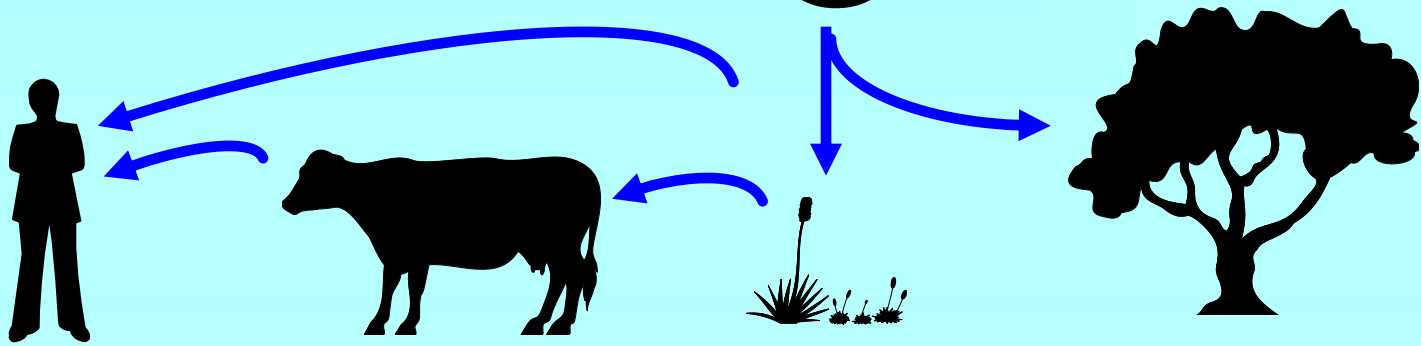
cosmic radiation



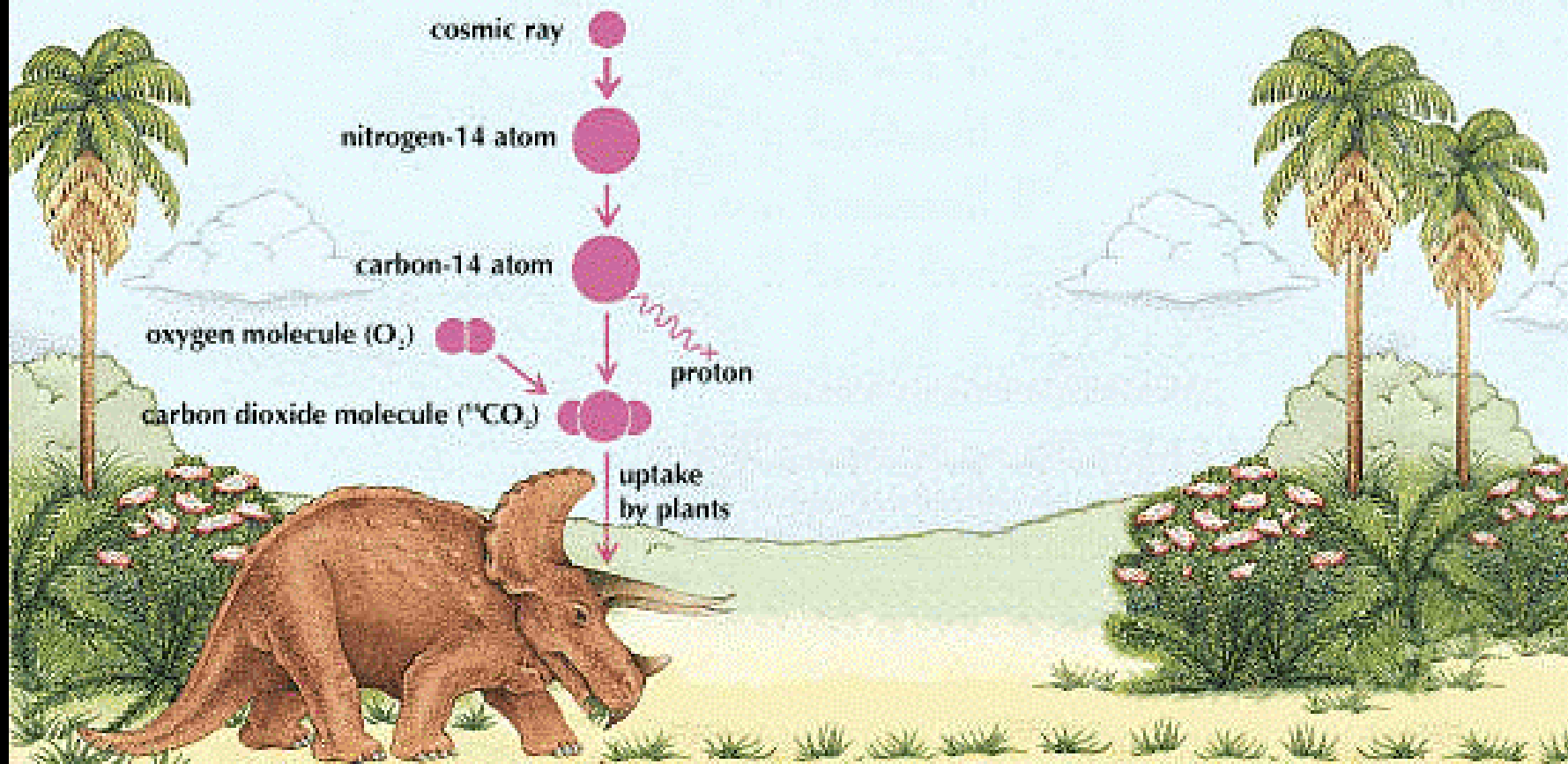
nitrogen atoms



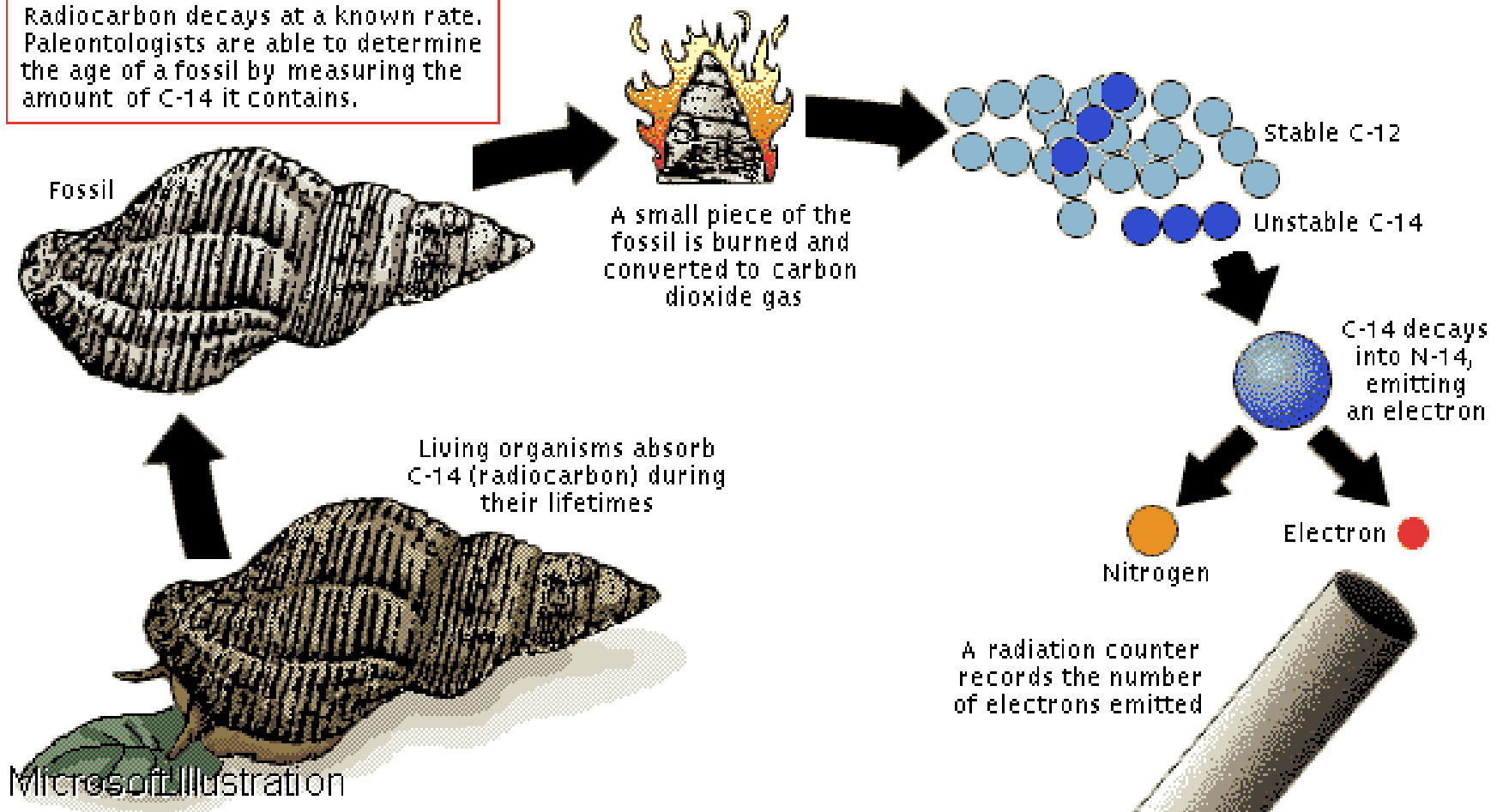
carbon 14



CARBON-14 PRODUCTION AND UPTAKE



Radiocarbon decays at a known rate. Paleontologists are able to determine the age of a fossil by measuring the amount of C-14 it contains.



Radioactive Dating of Fossils

- ❑ **Carbon 14 Dating is not useful past about 30,000 years because of its relatively short half-life**
- ❑ **Completely fossilized samples cannot be dated by any radioactive methods**
- ❑ **Must date the igneous rock nearest the fossil using U/Pb or K/Ar Methods**